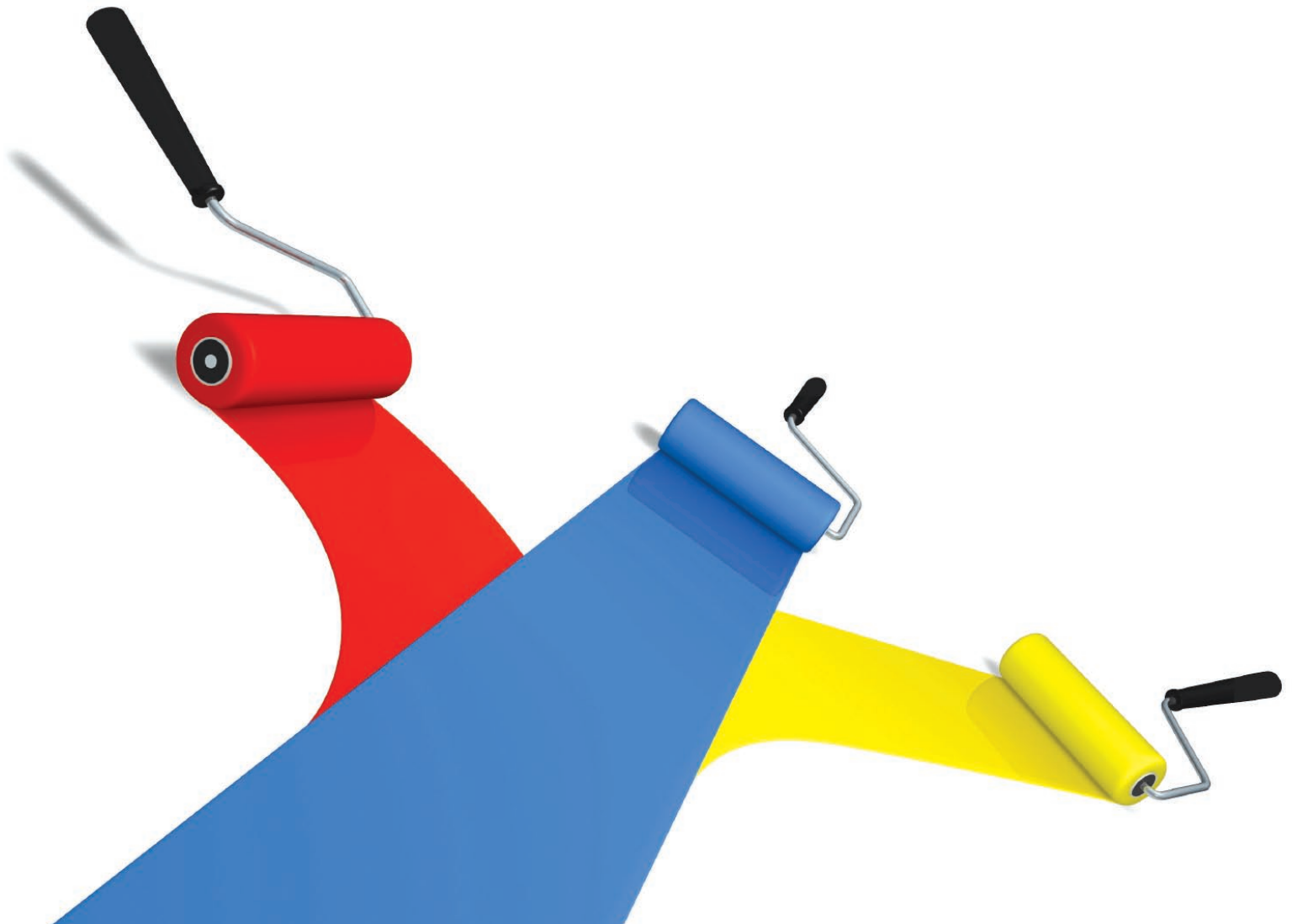


Canon
advanced simplicity®

**Colour imageRUNNER
iR C4080/iR C4580**

Combine the advantages of a
powerful colour printer with
advanced multifunction features and
you have an exceptional product that
makes business more efficient.



imageRUNNER

iR C4080/iR C4580

With the capacity to print at exceptionally high-quality and speed, and then finish documents to a professional standard automatically, the iR C4080 and iR C4580 are ideal for corporate workgroups and print rooms that need to produce a wide variety of documents on demand.

In addition to Canon's print, copy, send, fax and scan features, these devices come equipped with the latest security features to protect information, Canon's MEAP technology for customising device functionality, and options such as Canon Universal Send for distributing documents direct from their touch-screen displays. With all this and more, the iR C4080 and iR C4580 really make business sense.

High-speed printing

Harnessing the latest in printing and processing technology, the iR C4080 and iR C4580 print at 36 and 40 pages per minute in colour, 40 and 45 page per minute in black & white.

Professional print quality

Canon's innovative REOS (Resolution Enhancement Over Sampling) print board technology produces true 1,200 x 1,200 dpi print quality (9,600 x 1,200 dpi optimised). 256 colour gradations ensure dynamic graphics and photos.

Super fast document scanning

The unique flow-scan system processes double-sided pages at a speed of up to 70 images per minute at 300dpi in black & white and colour.

Super G3 fax option

Prevent bottlenecks with the Super G3 fax option that transmits at only three seconds per page. Single and dual-line configurations available.

On-device web access

Use this feature to access documents straight from an intranet or the internet and print them without the need of a computer.

Remote user interface

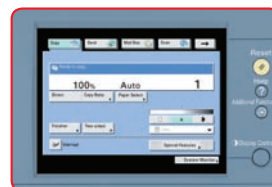
For convenience, you can control the device from your workstation. Check job status, access device mailboxes, add new users and more.

iW Management console

This highly-scalable, web-based software utility makes it easy to set-up and manage devices on a network.



To find out more about slicing your costs and increasing productivity visit canon.com.au/business and download the multifunction devices brochure.



Touch-screen display and keyboard.



On-device Web browser

Designed with efficiency in mind

Fast and simple to use

On closer inspection, you'll find that every facet of the imageRUNNER iR C4080 and iR C4580 has been designed for maximum efficiency. The smart design of their bodies, for example, provides easy access to all of their external features to improve productivity.

Their large, colour touch-screen displays make operation simple. The step-by-step help screen feature gives you clear instruction as you perform a task. The interactive tutorial CD helps you learn with simulated demonstrations, so you can take advantage of even the most advanced features easily and immediately.

Innovative flat-four design

Both models come equipped with Canon's flat-four print engine. Renowned for its reliability, you're assured of consistent, uninterrupted throughput.

Fast job processing

Canon's imageCHIP technology utilises the dual CPUs to maximise throughput. One CPU is dedicated to the concurrent processing of print, copy, scan and fax jobs, the other to the fast processing of image data.

Three printer kit choices

You have the choice of three printer kit options to match the types of printing your organisation most commonly performs.

Colour Network Multi-PDL printer kit

This economical built-in printer kit utilises the power of Canon's imageCHIP platform to maintain efficiency. It supports PCL 5c and PostScript 3 emulation.

EFI imagePASS H1 printer kit

Ideal for colour-intensive and multiuser environments, this kit features a dedicated Intel Celeron M 1.5GHz processor. It provides a high level of colour matching and it supports Adobe PostScript 3 and PCL 5e emulation printing.

ColourPASS GX100 printer kit

This powerful external server is ideal for graphics-intensive and light production printing environments. It features an Intel Pentium 4 3.2GHz processor for running high-end software such as the EFI Graphic Arts Feature Set and it supports Adobe PostScript 3 printing.

EFI System 8 software

Both the imagePASS H1 and ColorPASS GX100 kits include EFI System 8 software for greater control of workflow and image quality. Both kits are variable data printing ready.

Ultra fast rendering technology

All three printer kits incorporate Canon's UFR II (Ultra Fast Rendering) print driver language for efficient processing between printer and driver.

Twin-Belt fusing technology

Twin-Belt Fusing Technology saves power and shortens warm up time, while enabling the devices to print on a wide range of media stocks and weights.



The flat-four, single-pass engine provides easy access to the toner cartridges and paper path

High-quality colour printing and finishing on demand

A sensible alternative to outsourced printing

Combining excellent print quality with a wide variety of automatic finishing options, the iR C4080 and iR C4580 are a cost-effective alternative to outsourced printing. From engaging marketing collateral to eye-catching forms and documents, these devices are an economical and efficient way to produce documents on demand.

With the widest range of finishing options in their class, the iR C4080 and iR C4580 give you the capacity to finish all types of documents to a professional standard. Choose from simple collation, stapling and hole punching, through to automatic saddle-stitched booklet making.

Large paper capacity

For interruption-free printing the standard 1200-sheet paper capacity can be boosted to a maximum 5,000 sheets with the optional side paper deck, (2,700 sheets), and the additional cassette pedestal, (1,100 sheets).

Efficient paper handling

To minimise handling chores, the large 100-sheet duplexing automatic document feeder handles all kinds of stock with ease.

Excellent stock versatility

The external paper trays accommodate stocks up to SRA3 in size and 209gsm in weight. The 100-sheet by-pass tray accepts stocks up to 253gsm, as well as selected envelopes and pre-punched paper.

Convenient copy features

Copy Reservation saves up to five jobs in memory and then prints them when the device is free. Job Done sends an email notification when a job is complete.

Copy fast

To speed up copying, program common sets of functions and then copy using the 'quick buttons' on the Express Copy menu.

Advanced security features

To maintain security and meet compliance obligations, you can choose from a variety of document, device and data security features.



Paper supply system including optional side paper deck

Device Signature PDF

This optional feature adds a secure digital signature with the device details to PDF documents.

User Signature PDF

This optional feature adds the user's details to PDF documents.

Secured Print

This feature delays printing until a password is entered at the device.

Security Kit A2

This optional kit protects information on the hard drive with 128-bit encryption and three levels of disk overwriting.

ID Management

Use this feature to set volume limits and control access to the print, copy and scan features for up to 1,000 individuals or groups.



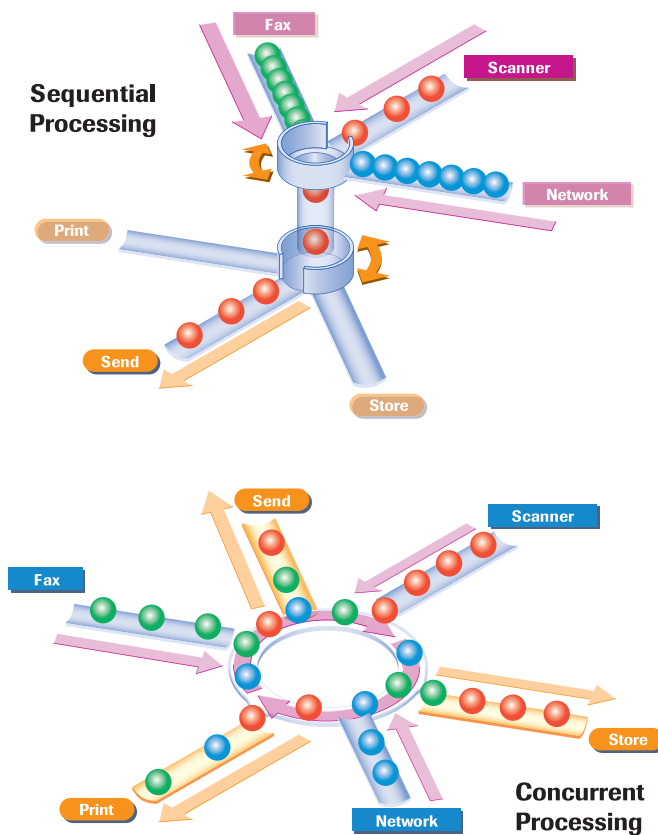
Toner replacement is clean and hassle-free



100 sheet duplexing automatic document feeder

Concurrent multi-task processing

Canon's imageRUNNER technology allows printing, scanning, copying and storage requests to be concurrently processed through a core controller. The system features integrated networking with Gigabit Ethernet support. Unlike traditional processing systems that act like an intersection, where one function has to wait for another, it acts like a roundabout, making processing faster.



Powerful built-in server

To power these models Canon has developed a new core controller featuring Canon's unique dual CPU system, 768MB of RAM and a 60GB SATA hard drive.

Handy built-in mailboxes

imageRUNNER mailboxes are a convenient place to store frequently used documents for printing on demand. Users can set up to 100 mailboxes and store up to 8,000 pages.

Advanced mailbox features

Use the advanced features to merge documents on the device before sending or printing. Files can be sorted by documents name or time and date. You can also register users' email addresses with a mailbox and then take advantage of URL Send. When a new document is added this function sends a link via email, instead of the document itself, thereby reducing network congestion.

eMaintenance remote monitoring

Canon's optional eMaintenance service is a remote device management solution designed to optimise the productivity of your imageRUNNER and help save your business time and money. The embedded Remote Diagnostic System (eRDS), allows your imageRUNNER to send messages securely to Canon's eMaintenance gateway. Meter readings, maintenance codes and consumables usage are all monitored and relayed back to local service teams, who can proactively manage your imageRUNNER fleet.

Convenient Remote User Interface

For convenience, you can control the device from your workstation. Check job status, access device mailboxes, add new users and more.

Equal access for all

Optional Equal Access features help the visually impaired and those with physical disabilities. The Voice Operation Kit allows users to operate the device using spoken commands, while the Remote Operator feature mirrors the device's display on a workstation or laptop.

The voice operation kit allows operation via voice commands



Send to email, desktop or other networked devices with Universal Send

Scan, save and send in one step

With this Canon technology, you can scan, save and send documents in digital formats such as PDF, JPEG and TIFF.

In one step, you can scan a document and:

- Email it to an individual or group
- Store it in an imageRUNNER mailbox
- Send it as an iFAX over the Internet
- Send it to a folder on your desktop or on the network

Secure PDF scanning kit

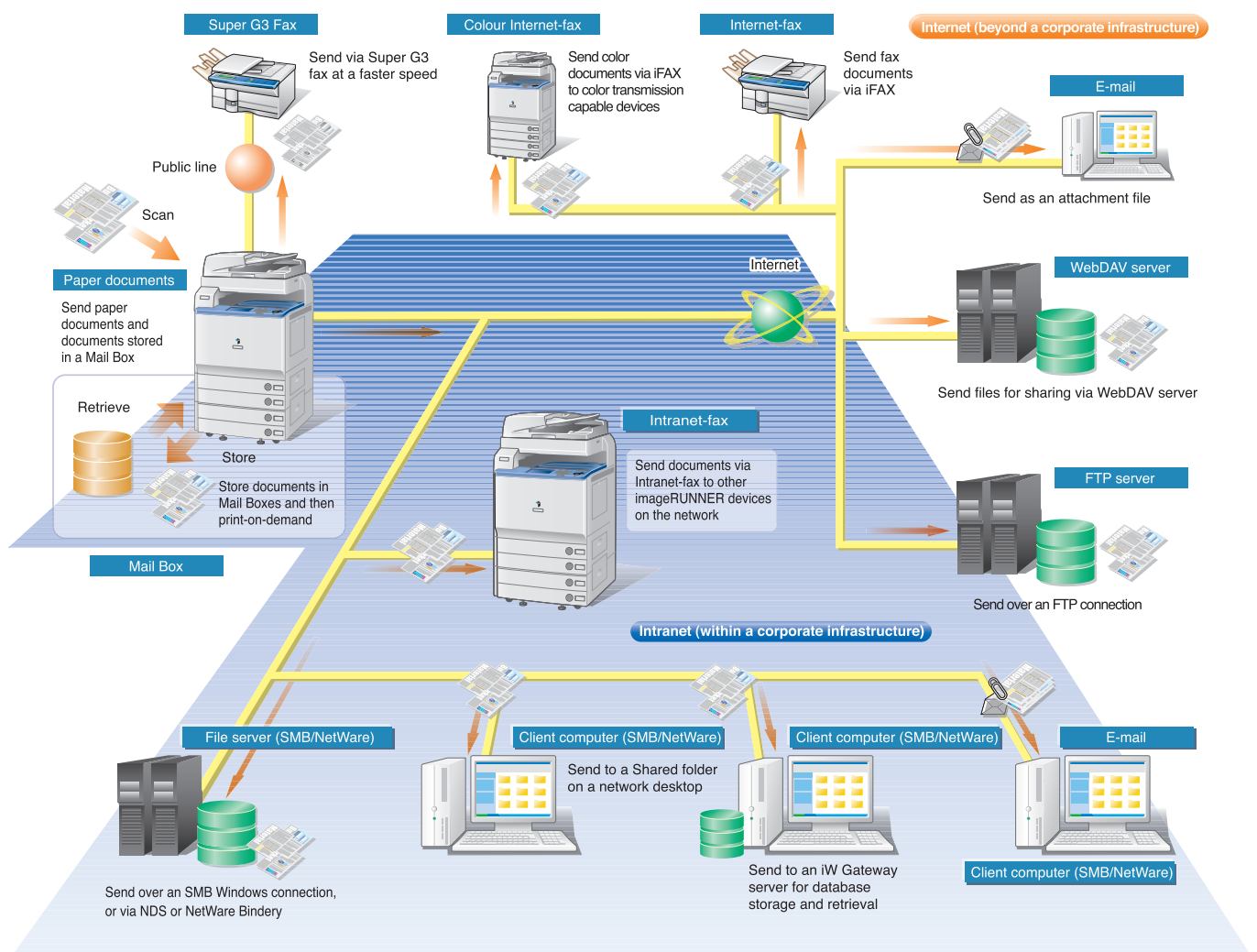
This optional kit features two functions for secure PDF sharing. The Encrypted PDF function encrypts and password-protects documents and also control things like who can print or make changes to a file. The Device Signature function will embed a digital signature so the recipient can confirm the authenticity of the document.

Advanced PDF scanning kit

This optional kit provides three fantastic enhancements. With PDF Compact, you don't need to worry about full colour documents clogging your network. Selecting PDF Compact when scanning, will produce a document with all the versatility of regular PDF at up to a tenth the size.

The Searchable PDF function makes life easy when you need to retrieve information later using Adobe Acrobat. By selecting Searchable PDF when scanning, documents are saved as full-text searchable PDF documents automatically.

Another unique function is Trace & Smooth PDF which analyses the components of your document and optimises the reproduction of text and images, whilst maintaining low file sizes. It also converts line art work into editable vector graphics format.



Canon MEAP technology

MEAP or Multifunctional Embedded Application Platform is a significant step forward for multifunction devices. This Canon proprietary technology allows you to customise the functions of these devices to suit your organisation's processes and document workflow. This open-platform technology allows customised business applications to be installed on the device and accessed from its large, touch-screen display.

Unlimited adaptability

With an appropriate MEAP application installed on the device, it can be taught to login and authenticate users via their swipe card. The application may also be programmed to allow users to add metadata to scanned documents and seamlessly route them into back-end systems or databases. Meanwhile, records of all the user activity on the device can be logged in real-time and passed to a cost recovery application for reporting and billing. With this kind of adaptability, the possibilities for tailoring a device's functions to a particular industry or organisation are endless.

Canon Document Solutions

To improve organisational efficiency even further, these devices can be teamed with Canon's Document Solutions software. This family of advanced applications works in unison with your imageRUNNER to enhance the way an organisation captures, stores, retrieves and communicates information. Canon Document Solutions incorporates a range of software applications that together encompass every aspect of an organisation's document workflow. A selection of applications from Canon and its partners is offered so we can match a solution to your exact needs.



MEAP applications can be operated directly from the touch-screen

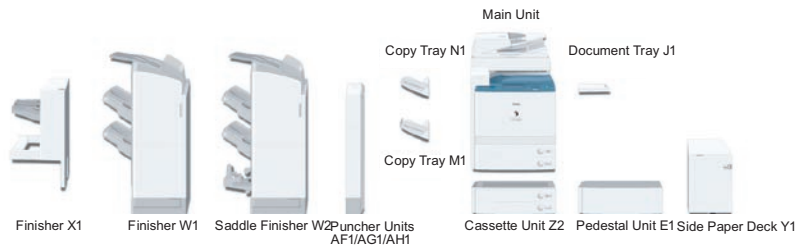
Environmentally friendly

Canon's "eco-tech" approach to creating products emphasises harmony between ecology and technology. From product design to manufacture, we work to conserve energy, maximise product lifecycles and eliminate hazardous materials. These environmentally friendly devices also comply with the European Union's Restriction of Hazardous Substances (RoHS) directive. Considered the most stringent environmental directive in the world, its aim is to eliminate six hazardous substances from products.



Specifications

iR4080/iR4580



BASIC SPECIFICATIONS	
Type:	Colour Digital Multifunctional Imaging System
Imaging System:	Laser Dry Electrostatic Transfer
Developing System:	Dry Dual Component System
Fixing System:	Twin-belt Fixing with Induction Heating
Transfer System:	Intermediate Transfer Belt and Roller
Charging Method:	Ozone-less Roller
CPU:	ImageCHIP Dual CPU design
Interface:	100BASE TX/10BASE-T (RJ-45), USB 2.0, (Host), USB 2.0 (Device)
First-copy Time:	6.7 sec. black & white 9.5 sec. full colour
Warm-up Time:	5 min. or less
Acceptable Originals:	Sheets, books and solid objects (up to 2kg)
Maximum Original Size:	A3
Copy Sizes	
Cassette:	A5R – 305mm x 457mm
Manual:	100mm x 148mm – 320mm x 457mm
Max. Mail Boxes Supported:	100
Max. Copy Reservation:	5 Jobs
Resolution	
Scanning:	600 x 600dpi
Engine:	1,200 x 1,200dpi (true)
Printing:	9600 x 1,200dpi (equivalent)
Half-tone:	256 Gradations
Density Adjustment:	Automatic Exposure/Manual (switchable/9 stages)
Engine Speeds	iR C4080 iR C4580
A4 b&w/colour:	40/36 ppm 45/40 ppm
A3 b&w/colour:	23/20 ppm 23/20 ppm
Duplexing:	Standard automatic tray-less
Magnification:	
Standard Mode:	100%
Presets:	5 reductions/4 enlargements
Zoom Mode:	25% – 400% (in 1% increments)
Multiple Copies/Prints:	1 to 9,999
Paper Supply	
Standard:	Dual 550-sheet Paper Cassettes (1100 Sheets) Stack By-pass (100 Sheets)
Optional:	Dual 550-sheet Paper Cassettes (1,100 Sheets) Side Paper Deck – 2,700 Max. Total = 5,000 Sheets
Paper Weights:	64 to 209gsm (Cassettes) 64 to 253gsm (Manual)
Dimensions (H x W x D):	762mm x 620mm x 850mm
Weight:	141kg
Power Requirements:	230V, 7A, 50Hz/60Hz
Power Consumption:	Max. 1,665kW, Standby 350W, Sleep 3W
Time to return from Sleep:	30 seconds or less
Maximum Ozone:	Initial 0.01ppm, After use 0.035ppm
Maximum Noise Levels:	Operating 74dB, Standby 50dB
DADF-M1	
Acceptable Original Sizes:	A5 – A3
Acceptable Paper Weights:	42 – 128gsm
Original Capacity :	100 sheets (80gsm)
Dimensions (H x W x D):	151mm x 576mm x 552mm
Weight: Approx.	15kg
CASSETTE FEEDING UNIT-Z2	
Number of Drawers:	2 Front-loading Adjustable Drawers
Paper Capacity:	2 x 550 Sheets
Acceptable Paper Weights:	64 – 209gsm
Paper Sizes:	A5R, B5R, B5, A4R, A4, B4, A3

Dimensions (H x W x D):	312mm x 620mm x 705mm
Weight:	Approx. 30kg
SIDE PAPER DECK-Y1	
Copy Size:	A4, B5
Acceptable Paper Weights:	64 – 209gsm
Capacity:	2,700 sheets (80gsm)
Dimensions (H x W x D):	432mm x 324mm x 591mm
Weight:	Approx. 30kg
FINISHER-X1	
Number of Trays:	One
Acceptable Paper Sizes:	99mm x 140mm - 305mm x 457mm
Acceptable Paper Weights:	64 – 253gsm
Max. Capacity: 1	,000 Sheets (A4); 500 Sheets (A3)
Staple Mode:	50 Sheets (A4), 30 Sheets (A3) 80gsm
Dimensions (H x D x W):	727mm x 600mm x 401mm
Weight:	Approx. 16kg
FINISHER-W1	
Number of Trays:	Four
Acceptable Paper Sizes:	99mm x 140mm - 305mm x 457mm
Acceptable Paper Weights:	64 – 253gsm
Tray Capacity:	
Top Tray:	250 Sheets (A4)
Middle Tray: 1	,300 Sheets (A4)
Lower Tray:	2,450 Sheets (A4)
Staple Positions:	1 – any corner 2 – side margin
Staple Capability:	50 Sheets (A4), 30 sheets (A3)
Dimensions (H x D x W):	1,174 mm x 656mm x 679mm
Weight:	Approx. 50kg
SADDLE FINISHER-W2	
Number of trays:	Three
Acceptable Paper Sizes:	99mm x 140mm - 305mm x 457mm
Acceptable Paper Weights:	64 – 253gsm
Tray Capacity:	
Top Tray:	250 Sheets (A4)
Middle Tray:	1,300 Sheets (A4)
Lower Tray:	2,450 Sheets (A4)
Staple Position:	Multi-position Stapling (1) Top Corner (2) Side Margin (3) Saddle-stitch
Stapling Capacity:	50 Sheets (A4), 30 Sheets (A3)
Saddle-stitch Specifications:	
Paper Sizes:	A4R - 305mm x 457mm
Paper Weight:	64 to 105gsm 64 to 253gsm (Cover only)
Stapling Capacity:	15 Sheets (60 pages) at 80gsm
Folding:	V-folding Standard
Dimensions (H x D x W):	1,174 mm x 656mm x 679mm
Weight:	Approx. 50kg
MULTI PDL KIT-N1	
PDL:	UFR II, PostScript3, PCL5c
Memory:	1.5GB (Shared)
Hard Disk:	80GB (Shared)
CPU:	ImageCHIP Dual CPU design
Resolution:	9600 x 1,200dpi (equivalent)
Supported OS:	
UFR II:	Windows 98 / ME / 2000 / XP / 2003 / Mac OS 9.0 / X / Linux
PS:	Windows 98 / ME / 2000 / XP / 2003 / Mac OS 9.0 / X / Linux
PCL:	Windows 98 / ME / 2000 / XP / 2003
Interface:	100BASE TX/10BASE-T (RJ-45), USB 2.0 (Device)
Network Protocol:	TCP/IP (LPD / FTP / Port9100 / IPP / IPPS)

	SMB / email), IPX / SPX (NDS, Bindery, NDPS-GW), AppleTalk (PAP)
COLOUR UNIVERSAL SEND KIT-F1	
Type:	Colour network push scanning
Scanning Resolutions:	100 / 150 / 200 / 300 / 400 / 600dpi
Scanning Speed:	70 ipm (b&w and colour at 300 dpi)
Interface:	100BASE TX/10BASE-T (RJ-45), USB 2.0 (Device)
Supported Protocols:	SMB / FTP / SMTP / NCP / WebDAV
Supported OS:	(SMB) Windows 98 / ME / 2000 / XP / Server 2003 / Mac OS 10.4.x / Unix / Linux (using Samba 2.2.8a or later) (FTP) Windows 2000 Server / XP Pro / Server 2003 / Solaris 2.6 / Red Hat Linux 7.2 or later / Mac OS 10.4.x / FTP Server for iW Gateway (NCP) Novell NetWare 5.1/6.0/6.5 (WebDAV) (FTP) Windows 2000 Server / XP Pro / Server 2003 / Windows 2000 Server and Apache 2.0 for Win32 / XP Pro and Apache 2.0 for Win32 / Solaris 2.6 or later, and Apache 2.0or later / Red Hat Linux Enterprise AS/ES/WS 4.0 or later and Apache 2.0 or later
Supported Formats:	JPEG / TIFF (MMR) / MTIFF / PDF / Encrypted PDF / Searchable PDF / Scalable PDF / Compact PDF / Device Signature PDF / User Signature PDF
ADDITIONAL OPTIONAL ACCESSORIES	
• Super G3 Fax Board-V1 (Single) • Super G3 Fax Board-H1(Dual Line)	
• Copy Tray-N1 (Face down) • Copy Tray-M1 (Face up)	
• FL Cassette-X1 (spare) • Document Tray-J1	
• Hole Punch Units AH1(2 holes)/AG1 (3 holes)/AF1 (4 holes)	
• imagePASS-H1 Print Controller • ColorPASS GX100 Print Server	
• Advanced PDF Kit-A1 • Secure PDF Kit-A1	
• Digital User Signature PDF-A1 • Barcode Print Kit-A1	
• Web Access Software Kit-E1 • Security Kit-A2	
• Security Expansion Board-E1 • Voice Guidance Kit-A2	
• Remote Operator Software-A2 • Plain Pedestal-E1	



™ All company and/or product names are trademarks and/or registered trademarks of their respective manufacturers in their markets and/or countries.

Canon reserves the right to change specifications without notice.

1 Based on sending a standard document (Canon Fax Standard Chart No.1) to a Canon fax, excluding control times and without telephone line interference.

Zanara Copiers

Your Independant Canon Specialist

David Gurdler
Manager
PO Box 225
Biggera Waters Q4216

info@zanara.com.au
ph: 07 5563 9588
mobile: 0404 894 553

Canon
advanced simplicity®